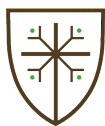


EPIPHANY



*Featuring artwork by
Cameron Cone & Asher Wood*



ALL SAINTS PRESBYTERIAN CHURCH

GALLERY • EPIPHANY 2020

“And the Lord went before them by day in a pillar of cloud to lead them along the way, and by night in a pillar of fire to give them light, that they might travel by day and by night. The pillar of cloud by day and the pillar of fire by night did not depart from before the people.” - Exodus 13:21-22

FIRE / EPIPHANY

Over these seasons of Advent, Christmas, and Epiphany, our paintings and photographs have looked at natural elements that God put in the sky to navigate people in the Bible. When the Jews followed Moses through desert for 40 years, they were guided by a pillar of cloud by day, and a pillar of fire by night. The Magi followed a star to find the baby Jesus.

God used otherwise mysterious elements of nature to bring clarity to his chosen people, and while the guidance provided shows God's power and care for us, it doesn't remove mystery from these objects, or from God himself. Like scientific pursuits or getting to know a person, our experience in getting some answers leads to more questions and a desire for more experience. Our very being is more of a story than a single moment of awareness, and knowing God proceeds in the same way.

"What makes the desert beautiful,' said the little prince, 'is that somewhere it hides a well...'"

*— Antoine de Saint-Exupéry, *The Little Prince**

As this art explores clouds, and stars, and fire, there is a reliance on wonder to navigate the mystery of these forms. We are exploring, and the exploring itself is finding as we find a process of looking, as we allow our minds to stay open to God showing up in his own way. Bono was talking about how to best be involved in helping those in need in Africa. He said recently that instead of asking God to be a part of what we're doing, it's better to figure out what God is doing, and be a part of that. As we approach nature and see what God is doing, let us remember that he has used nature before to speak to his people.

Beauty is truth, and truth beauty. Art is about beauty, but it's important to remember what C.S. Lewis pointed out – that something is beautiful but not because you think it is. Beauty isn't determined by the beholder, but by the Creator. As humans, and as artists, we each have a point of view, and we use this to try to gather an understanding of things.

Madeline L'Engle said, "I have a point of view. You have a point of view. But God has View." When we can't understand, we can still experience wonder from our point of view, and wonder is involuntary praise. With art, we hope to share in this wonder, encourage a sharing of our points of view, and see how God reveals Himself to us.

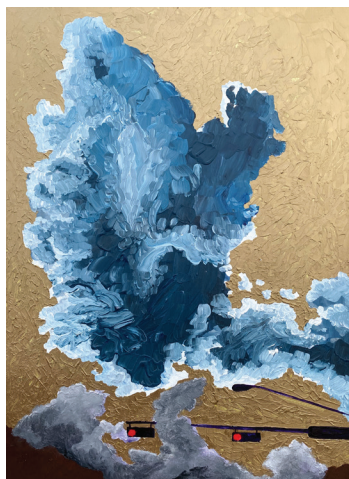
— Asher Wood



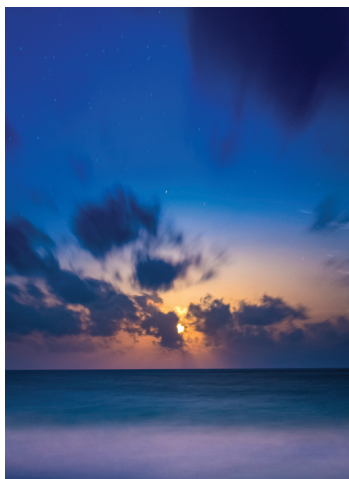
Asher Wood
Verdant, 2020
 22 x 31 in.
 Acrylic on Panel
 \$500



Cameron Cone
Stars 1 2019
 22 x 31 in.
 Photograph on Paper
 \$316



Asher Wood
Pillar I, 2019
 22 x 31 in.
 Acrylic on Panel
 \$500



Cameron Cone
Stars 2 2019
 22 x 31 in.
 Photograph on Paper
 \$316



Asher Wood
Kumo, 2019
 22 x 31 in.
 Acrylic on Panel
 \$500



Cameron Cone
Cloud VI, 2019
 22 x 31 in.
 Photograph on Paper
 \$316



Asher Wood
Windsong, 2019
 22 x 31 in..
 Acrylic on Panel
 \$500



Cameron Cone
Cloud III, 2019
 22 x 31 in.
 Photograph on Paper
 \$316



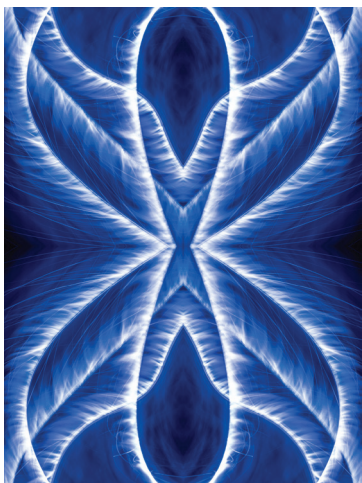
Asher Wood
Great Wide Open, 2019
 22 x 31 in.
 Acrylic on Panel
 \$500



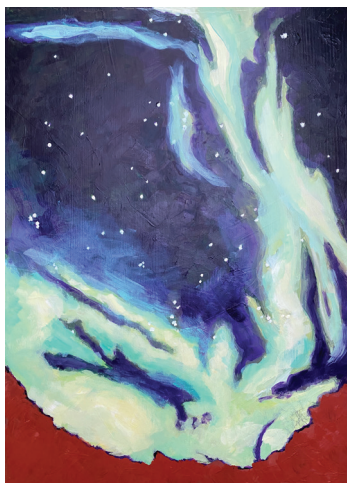
Cameron Cone
Cloud VII, 2020
 22 x 31 in.
 Photograph on Paper
 \$316



Cameron Cone & Asher Wood
Hoshi, 2019
 40 x 60 in.
 mixed media
 \$1,500



Cameron Cone
Cloud VIII, 2020
 22 x 31 in.
 Photograph on Paper
 \$316



Asher Wood
Kaen, 2020
 22 x 31 in.
 Acrylic on Panel
 \$500

For more information about the All Saints Gallery, to see all works available for purchase, and to download a Gallery Booklet, go to allsaintsaustin.org/gallery.

CAMERON CONE – BIO

"For God so loved the world, that he gave his only Son, that whoever believes in him should not perish but have eternal life." - John 3:16

Cameron Cone, Photographer and Director, is one of the industry's most innovative creative minds. He launched his own filmed content company, Hutchpicture Co., in Santa Monica, CA. Working with brands like Tom's Shoes, Bosu, Yonanas, and Walmart, Hutchpicture has delivered original, inventive photography and commercial content. Hutchpicture has also worked in serving agencies like Mark Burnett Productions, DBA Worldwide, and the Olympic Committee.

In 2011, BSN (now VWSE) acquired Hutchpicture, and Cameron began working full-time as the Creative Director over the east and west coast offices. Throughout his several years with the company, Cameron serviced illustrious clients such as the NFL, the NBA, Winter and Summer Olympics, The Kentucky Derby, the MLB, and the NCAA – just to name a few. Cameron spearheaded landmark film and photo productions, and has won awards for each of his and his team's delivered products.

In 2018, Cameron decided to focus on his commercial work, steering away from event production, and thus left VWSE to pursue freelancing on his own. He currently resides in Austin, TX.

www.hc2lab.com

Instagram: @hutchcone

hutchcone@gmail.com

Photographs are printed by Cameron with archival ink; select pieces printed on Hahnemuhle German Etching paper. Frames are hand-made using Douglas Fir, by Cameron & Asher.

ASHER WOOD – BIO

Asher grew up in Dallas, TX. After getting a degree in art at Davidson College in North Carolina and spending half a year in Scotland, he lived in Nashville and New York City before moving with his family to Austin in 2016. Since an early age, he's enjoyed making things with his hands, and while he's loved creating sculpture, photography and digital art, his first love is painting. Working in acrylic and encaustic media, his subjects range from portraits of people and animals, to clouds, to textured abstract expressionistic encaustic paintings. His wife Missy and three children Gaia, Presley, and Marlon are all consummate creators as well; and they inspire and encourage his creative life, on and off the canvas.

www.woodsquaredart.com

Instagram: @woodsquaredart

asher9@gmail.com

Paintings are framed in Douglas Fir, handmade by Cameron & Asher.



ALL SAINTS

PRESBYTERIAN

MUSIC & ARTS MINISTRY

David Lutes, Director - dlutes@allsaintsaustin.org

Sonya Menges, Administrator - smenges@allsaintsaustin.org