



TRUE to the UNSEEN

Featuring artwork by Erika Huddleston



ALL SAINTS PRESBYTERIAN CHURCH

GALLERY • EASTER & ORDINARY TIME 2018

TRUE TO THE UNSEEN

Eastertide and Ordinary Time provide extended periods to explore the depth and power of God revealed both in Christ's resurrection and in the work of the Holy Spirit in His people for the world. Erika Huddleston's dedicated exploration of God's unseen power in the created world - and the beauty, vitality, color, and light in her work - helps us to more fully comprehend how the light of the world brought by the risen Christ now infuses the whole of God's creation and us, His people. Through the resurrection and by the Holy Spirit, we have become, with Christ, the light of the world, empowered to seek His kingdom to come on earth as it is in heaven, enabled to fix our eyes on what is unseen.

"Eight days later, his disciples were inside again, and Thomas was with them. Although the doors were locked, Jesus came and stood among them and said, 'Peace be with you.' Then he said to Thomas, 'Put your finger here, and see my hands; and put out your hand, and place it in my side. Do not disbelieve, but believe.' Thomas answered him, 'My Lord and my God!' Jesus said to him, 'Have you believed because you have seen me? Blessed are those who have not seen and yet have believed.'

- John 20: 26-29

"So we fix our eyes not on what is seen, but on what is unseen, since what is seen is temporary, but what is unseen is eternal."

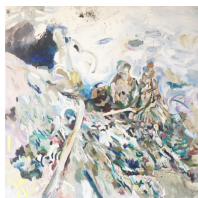
- 2 Corinthians 4:18

ARTIST STATEMENT

Erika Huddleston's artwork is focused on the study of nature in urban settings. She has spent time oil painting in situ at sites in Texas such as Waco Creek in Waco, Shoal Creek in Austin, the Trinity River in Dallas, and Post Oak Creek in Corsicana. Each of these series of paintings were painted in public parks along the creeks. Her interest is in urban wild places in city downtowns. Erika sits onsite while painting or drawing and has a practice of being in one place from 9 am to 6 pm over a period of days. As she paints, she observes the changes in the park that are not measurable by static maps. A map cannot record the number of people who jog by or the microclimates where butterflies gather, or the precise time that ants emerge in the spring, or flooding, fallen branches, new sprouts, etc. Erika's paintings record the wildlife ecosystem living in these "urban wilderness parks" which also function as part of the complex flood protection system for the city. Huddleston says of her intentions, "I like to capture things you can't find on a map, that are true to the unseen. They exist, but you just don't see them."

ERIKA HUDDLESTON
erikahuddleston.com

Erika Huddleston is a Texas artist who attended Parsons School of Design and the University of Texas for a masters of landscape architecture. She teaches art one day a week and is a contributor to "Aether" art journal and "Texas Architect." Texas Monthly magazine in Spring 2017 included her in their list of the top ten Texas artists to collect now. Huddleston was selected as a 2015 Hunting Prize nominee. In 2013-2014, she was an artist with bcWORKSHOP for an "Activating Vacancy" project in the Tenth Street historic district in Dallas, funded by the National Endowment for the Arts. She was the artist in residence with the Shoal Creek Conservancy in Austin in 2014. Huddleston's work is in the collection of the Four Seasons in Austin and multiple other private collections.

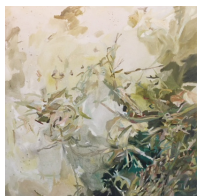


**LANDSCAPE RECORDING STATIC/DYNAMIC:
WACO CREEK II BAYLOR SCIENCE BUILDING/UNDER
THE BALD CYPRESS**

40x40

Oil on canvas

2017

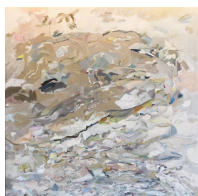


**LANDSCAPE RECORDING STATIC/DYNAMIC:
WACO CREEK V BELL'S HILL PARK**

27x27

Oil on canvas

2017



**LANDSCAPE RECORDING STATIC/DYNAMIC:
WACO CREEK VI OLD BAYLOR STADIUM**

40x40

Oil on canvas

2017



**LANDSCAPE RECORDING STATIC/DYNAMIC:
POST OAK CREEK, COMMUNITY PARK, CORSICANA I**

24x60

Oil on canvas

2017

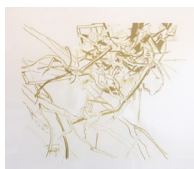


LEAVES

Lithograph, printed at Flatbed Press, Austin

Framed in painted maple

2012



SHOAL CREEK I (SHOAL CREEK GREENBELT)

16x20

Lithograph, printed at Flatbed Press, Austin

2012



SHOAL CREEK II (SHOAL CREEK GREENBELT)

16x20

Lithograph, printed at Flatbed Press, Austin

2012



CAMERON PARK, WACO I

Pencil on paper

2014



CAMERON PARK, WACO II

Pencil on paper

2014



CAMERON PARK, WACO III

Pencil on paper

2014



CAMERON PARK, WACO IV

Pencil on paper

2014

PRICE LIST

Waco Creek II	\$5,410
Waco Creek V	\$2,840
Waco Creek VI	\$5,410
Corsicana I	\$7,900
Leaves	\$ 350
Shoal Creek I	\$ 575
Shoal Creek II	\$ 575
Cameron Park I	\$ 675
Cameron Park II	\$ 675
Cameron Park III	\$ 675
Cameron Park IV	\$ 675

For purchase inquiries please contact hi@erikahuddleston.com

ALL SAINTS PRESBYTERIAN
PRESBYTERIAN CHURCH IN AMERICA

allsaintsaustin.org • 512-732-8383 • office@allsaintsaustin.org
7808 Rialto Blvd., Austin, TX 78735
